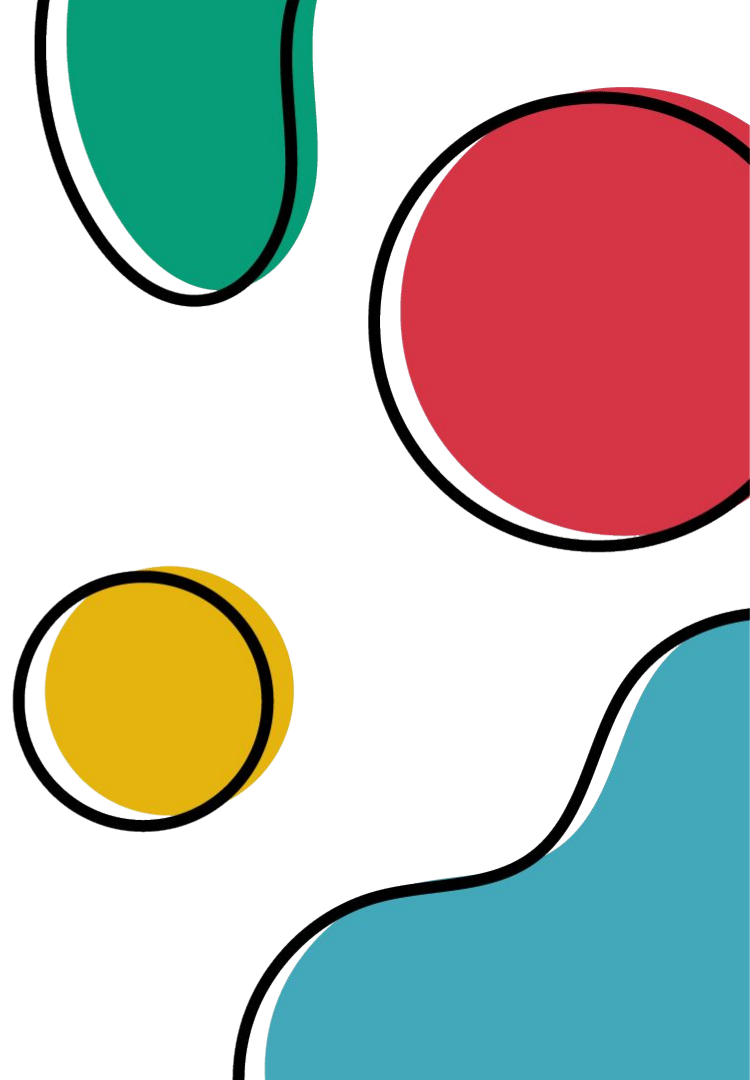




Advanced Data Sharing

Import data straight from our data warehouse to yours without the need for API integrations with even greater granularity.





Streamline Data Sharing

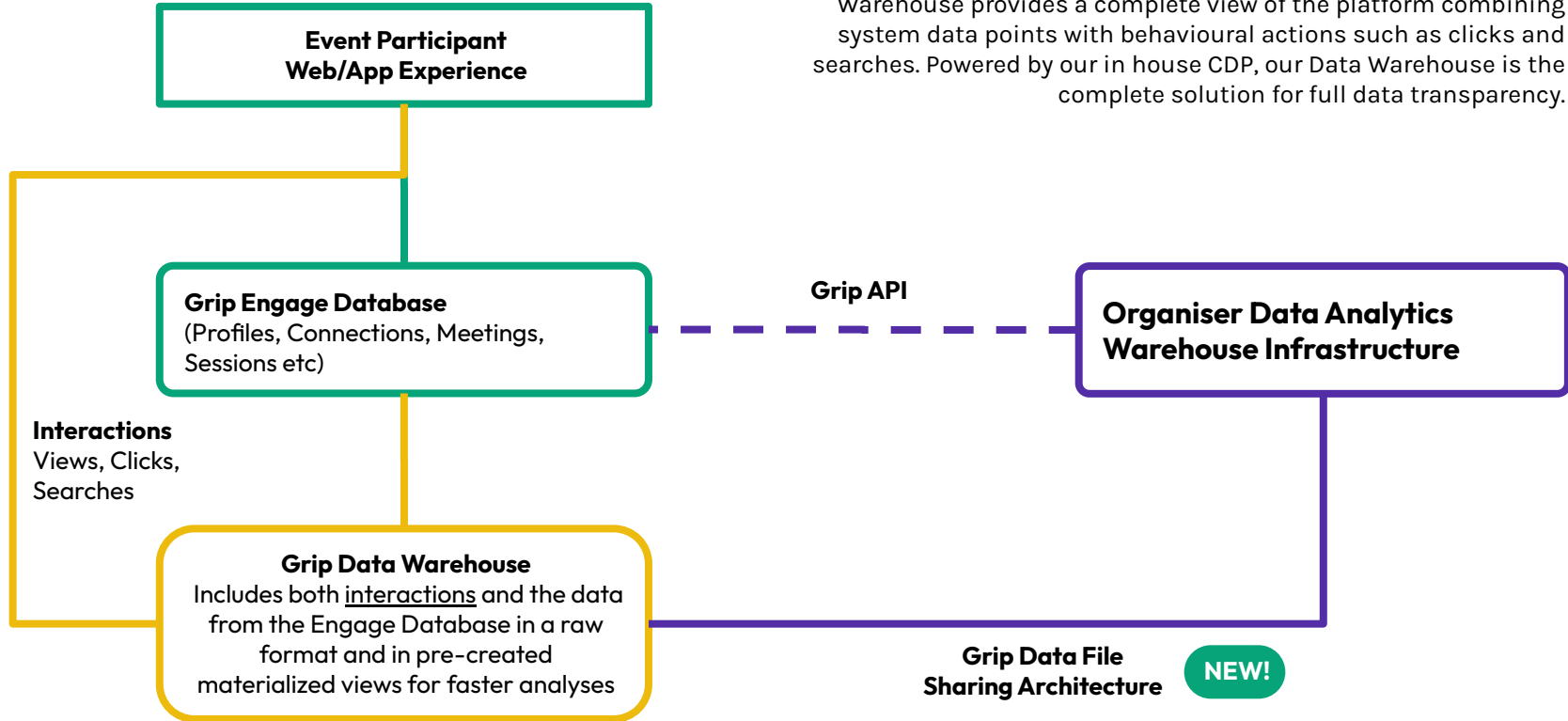
A new frontier in data sharing

Since 2021 Grip has been working on an advanced data warehouse system as part of its infrastructure and an in-house tracking SDK.

All the data collected on Grip is available in our data warehouse for customers in raw datasets and pre-created materialised views to make it easier to import, process and analyse the data.

Data Architecture

The Grip API includes key system data only, whilst The Grip Data Warehouse provides a complete view of the platform combining system data points with behavioural actions such as clicks and searches. Powered by our in house CDP, our Data Warehouse is the complete solution for full data transparency.



Engage API

Optimised for participants-specific actions and available for the retrieval of participant actions and data that you want to manipulate on Grip (e.g. change a users meetings) or display a user their own list of meetings on your own web platform.

API vs Data Files

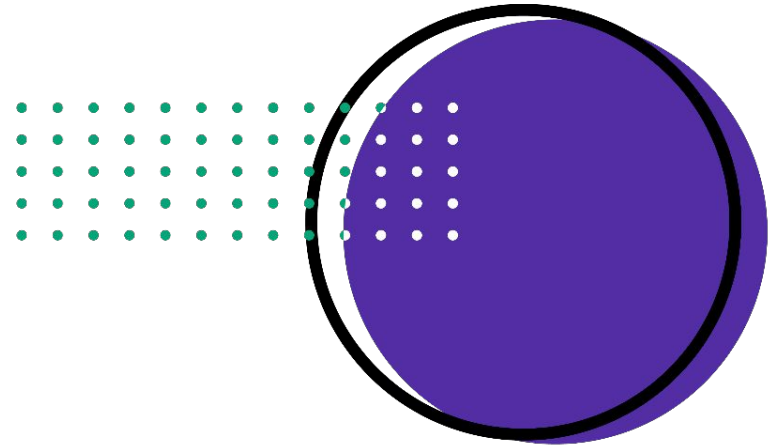
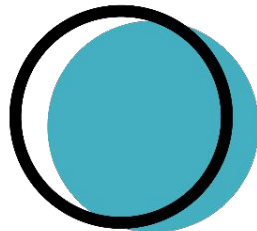
Data Warehouse Files

Using a combination of Apache Parquet and S3 Buckets we're able to share more data, faster and with greater accuracy and versatility straight from our data warehouse. Far superior for your own data warehouse imports and further analysis.



Data Intelligence Consultancy

If you're stuck building your own data warehouse architecture, or would like hands-on advice on how to structure your data, reports or other components of your data stack appropriately then Grip consultants can be hired to consult and create your own data warehouse systems.



Thank you

Book an event consultation

Grip.events

